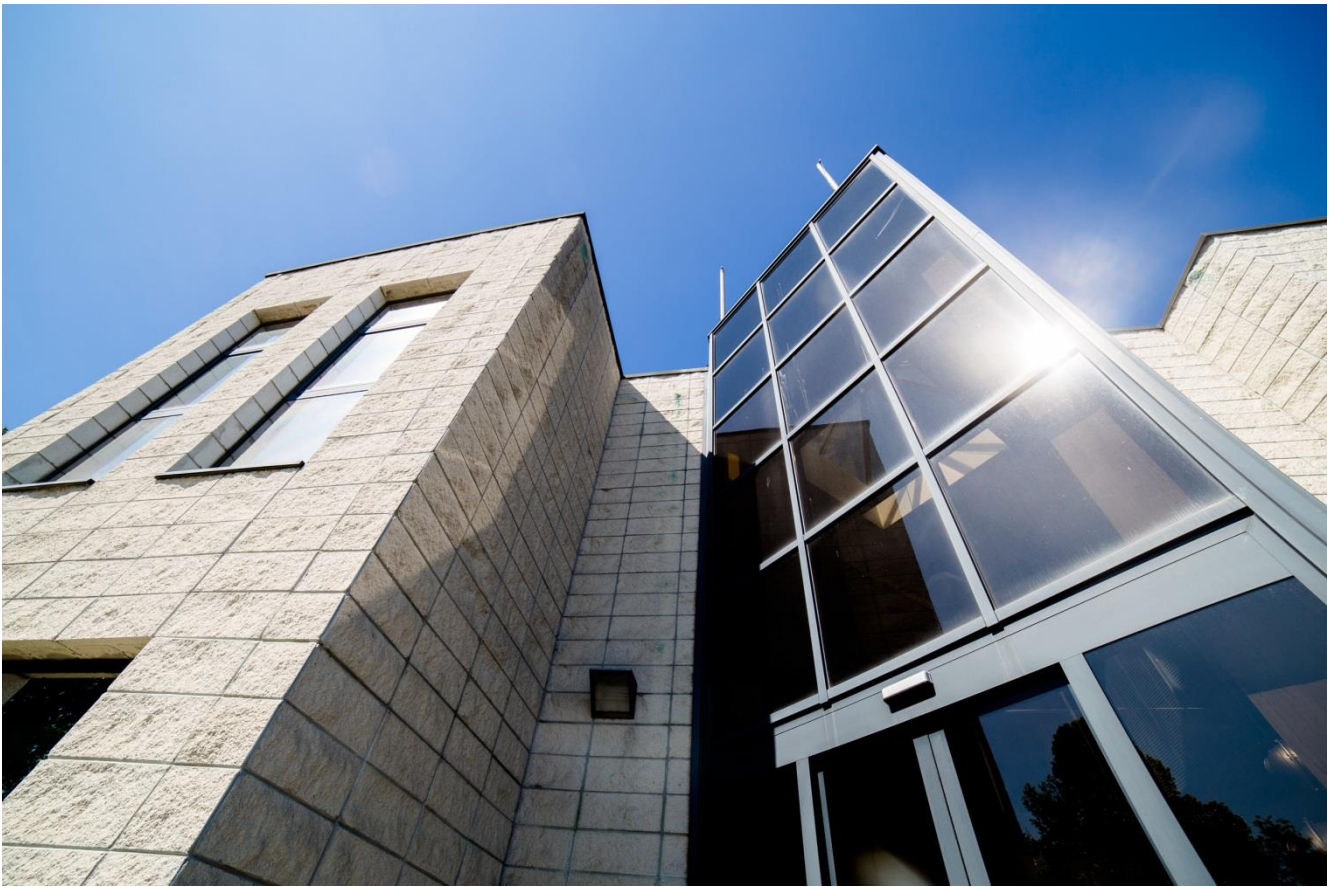


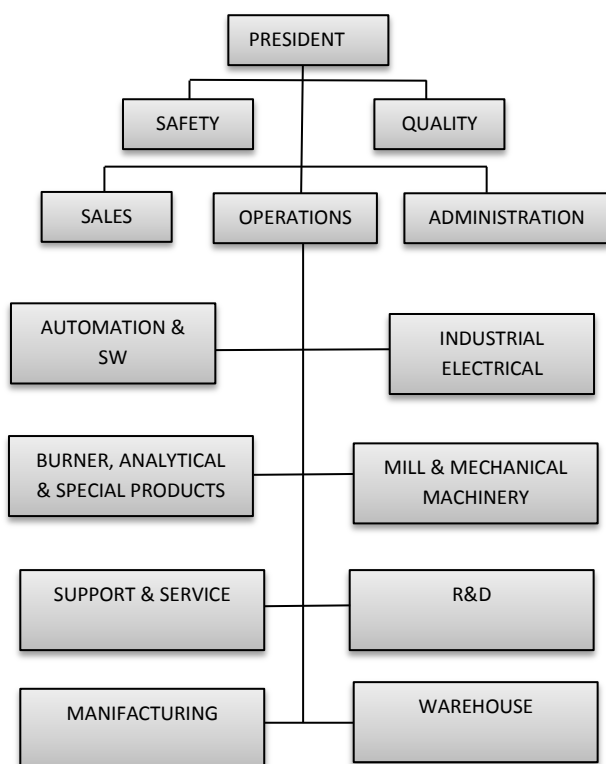
ETA AUTOMAZIONE COMPANY PROFILE



ETA was born forty year ago as outsourcing company of a group specialized in mill plant and related machines. His focus was concentrated on specialized control and automation solutions for the mill's requirements. The natural evolution of ETA was to expand the interested field out of original area; following this trend ETA realized solutions of automation, control and switchboards for different area and projects. This technologic improvement allow ETA, in the meantime of automation evolution, to propose a his own brand of mill's machine. From 10 years ago ETA goes to become part of INT group as technological center for special systems. The cooperation with the others companies of the group permit ETA to grow up the covered field areas expanding them up to supply of burners and spears for gas turbines.

The gained experiences in various sector identified ETA Automazione as a safe and reliable partner for all stages of a project.

Company Data



Turnover (in Euro)

| 2013 | 2014 | 2015 |
|-----------|-----------|-----------|
| 2.757.000 | 2.978.000 | 3.058.000 |

Employees composition

| Manager | Office Employees | Designers | Factory Workes |
|---------|------------------|-----------|----------------|
| 3 | 4 | 5 | 6 |

Infrastructures (in square meters)

| Offices | Workshop | Warehouse |
|---------|----------|-----------|
| 150 | 300 | 250 |



Covered Areas from ETA Experiences

Mill plants
Water treatment plants
Switchboards solution for industria
Automation for lime kilns

Chemical dosing plants
Dehydration plants
Switchboard civil solution

PLC controller for industrial plant

Chemical sampling plants
Prototype for automation
Switchboard for teleprotection

Analtic integration and proposal



Certifications



Well knowing the importance of work with quality and methodology, ETA has obtained the ISO9001 certificate. For the same reason it is able to obtain ATEX or special certification required case by case by the customer.



Partners



ETA Automazione is inserted inside the INT group. This group is configured as independent companies that collaborate and cooperate in order to maximize the workforce and the technological expertise. The companies constituting the group are

- ETA Automazione
- INT
- Termics
- Idea Automazione

Customer Reference List

| | | | |
|--------------------|---|------------------|---|
| Ocrim |  | ISG |  |
| Schneider |  | SIC |  <small>Società Impianti Calce S.r.l.</small> |
| Ansaldo Energia |  | Ansaldo Nucleare |  |
| SAMEC |  | Cosmec |  |
| Valvitalia |  | IREN |  |
| Termica Colleferro | | CSImpianti | |

References



ETA AUTOMAZIONE s.r.l.
Via delle Viole, 11 – 26100
CREMONA
Tel. 0372/38661 – 457403 –
Fax. 0372/413855
Mail. eta@tecno-site.it

